

The National Cadastral Information System

(Sistema Nacional de informação Cadastral – SNIC)



PCC Conference and Plenary Meeting

Cadastre - contributions for a low carbon economy and society

Lisbon, 26 to 27 May 2021

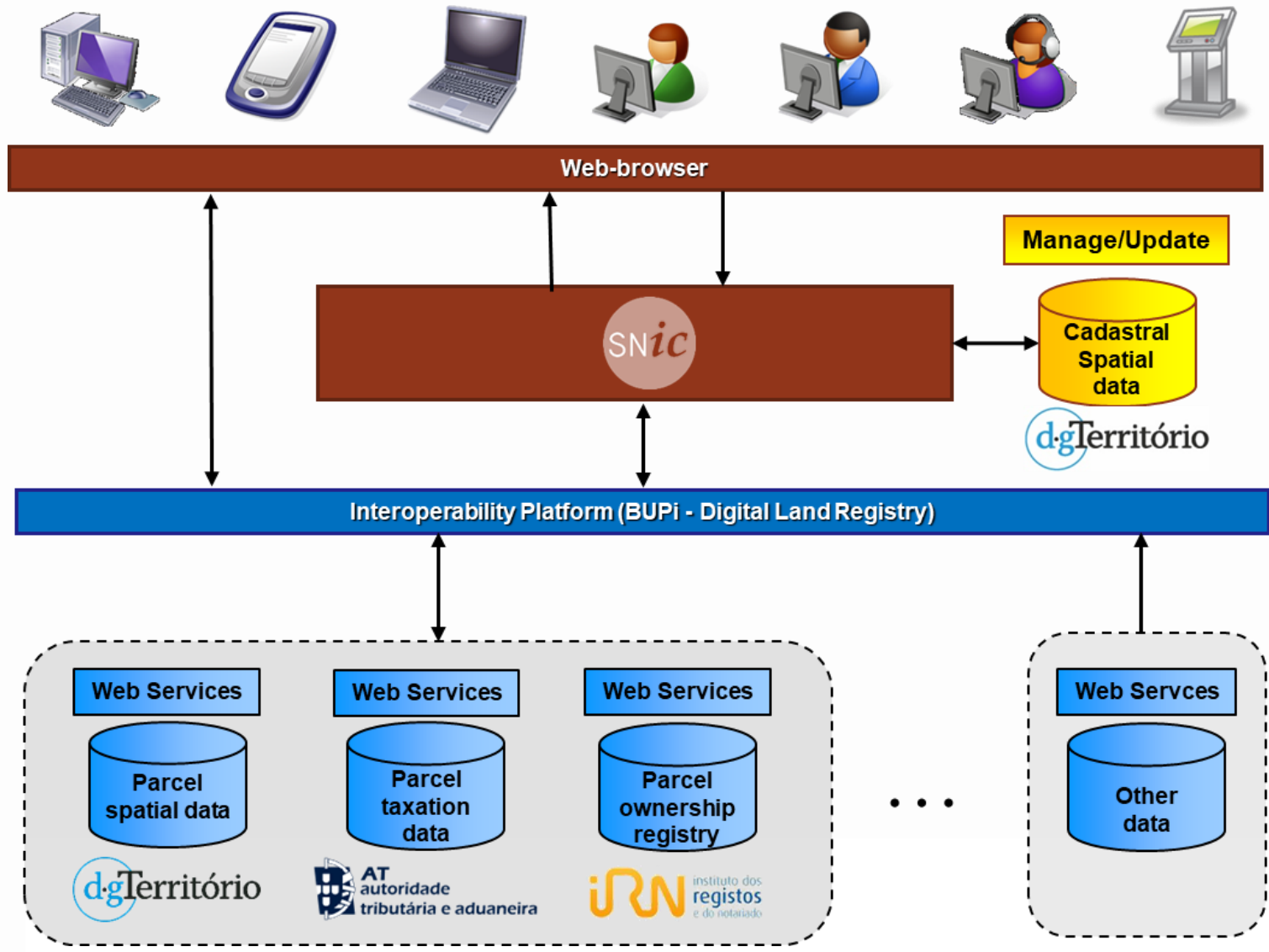


The National Cadastral Information System





What is SNIC





What are we doing

- New framework law (legal regime) of cadastre
- Implement a single cadastre management
- Decentralize cadastral execution and updating cadastral data
- Update and improve cadastre technicians on-line platform





Cadaster technicians platform

- Cadaster Technicians Platform is available at DGT web page and it is a way to accessing services for cadastre practice and professional activities
- Citizen can access an updated list of qualified cadastre technicians that can carry out their activity on portuguese mainland territory.



TÉCNICOS DE CADASTRO PREDIAL



How we are doing it

- Based on the experience gained
- Supported by new methodologies of authentication, certification, prior control, stakeholder accountability and implementation of continuous inspection systems
- Rationalizing resources
- Designing and materializing new value-added products and services





What is already done

Cadastral information online viewer

dg Território

Pesquisar...

Pesquisa Cadastro

1 2 3

1,033,977 prédios em cadastro disponíveis online

Selecionar o concelho clicando no mapa ou pesquisando:

Nome ou DICO...

Legenda:

- Concelhos em formato vetorial
- Concelhos em formato raster

© 2021 Direção-Geral do Território

50 km 1:2636874 PT-TM06/ETRS89 (EPSG:3763)



Online cadastre viewer (parcels)

Território

Pesquisa Cadastro

1 2 3

Concelho: LOULÉ
 Código Distrito/Concelho: 0808
 Regime de Cadastro: Predial Experimental
 Área de atuação: Lisboa

Selecionar prédio(s) clicando no mapa ou pesquisando:

Nº Declaração Pesquisar

< Voltar Pontos >

Blue Marble NASA Earth Observatory / © Ortos 2018, DGT - Direção-Geral do Território

© 2021 Direção-Geral do Território | 100 m | 1:3329 | 7645.559 -291468.845 | PT-TM06/FTRS89 (FPSG:3763)

More than 1 million cadastral parcels are currently available online



Online cadastre viewer (additional themes)

Within the scope of its attributions and competences, Directorate-General already provides a set of web services with relevant information to be used as a reference for analysis simultaneously with the representation of the cadastral parcels

The screenshot shows the 'dgTerritório' interface. On the left is a vertical sidebar with icons for home, menu, zoom in, zoom out, pan, info, full screen, and print. The main area is titled 'Temas' and contains a search filter 'Filtro...' with a 'Limpar' button. Below the filter is a list of themes, each with a gear icon for settings and a magnifying glass icon for search:

- Official Administrative Portugal Map (CAOP)
- National Agricultural Reserve (RAN)
- Land Use Regime Map (CRUS)
- National Ecological Reserve (REN)
- Land Use and Cover Map (COS)
- Built Areas
- Urban-Rural Interface



Online cadastre viewer (additional themes)

The screenshot displays the 'dgTerritório' online cadastral viewer interface. On the left, a sidebar titled 'Temas' (Themes) allows users to filter and toggle various cadastral and planning layers. The main map area shows an aerial view of a rural area with numerous red-outlined parcels, overlaid with blue and purple lines representing other planning boundaries. The interface includes a search bar at the top right, a scale bar at the bottom, and a copyright notice for 2021 Direção-Geral do Território.

dgTerritório

Temas

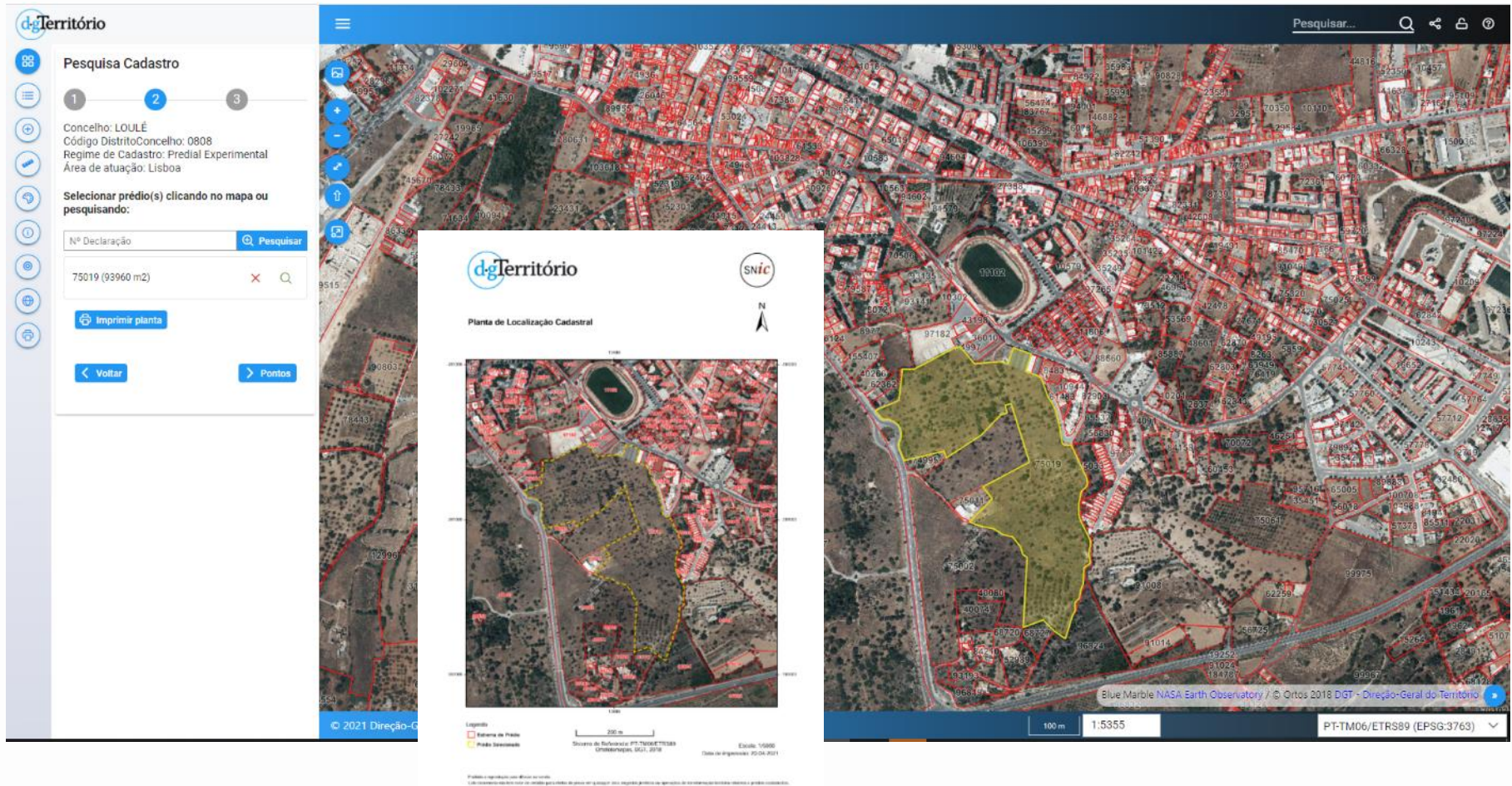
Filtro... X Limpar

- Nº de Prédio
- Nº de Secção
- Marco de Propriedade
- Prédio
- Limite de Secção
- Área Social de Folha
- Carta Administrativa de Portugal (CAOP)
- Reserva Agrícola Nacional (RAN)
- Carta do Regime do Uso do Solo (CRUS)**
 - Solo Não Classificado
 - Solo Rústico
 - Solo Urbano
- Reserva Ecológica Nacional (REN)
- Carta de Uso e Ocupação do Solo (COS)
- Áreas Edificadas
- Interface Urbano-Rural

© 2021 Direção-Geral do Território

100 m 1:4191 PT-TM06/ETRS89 (EPSG:3763)

SNic Online cadastre viewer (other utilities)



This viewer platform has features for localization, inquiry, design, loading user themes, web services and printing, with the possibility of crossing several layers of information such as topographic cartography, land use and cover cartography as well as aerial images



Future actions

Cadastral business model definition



Nation wide operations

cadastre acquisition



Completing SNIC implementation





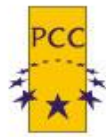
New demands

New challenges



Thank you

For any questions or clarifications, feel free to contact
paulo.torrinha@dgterritorio.pt



PCC Conference and Plenary Meeting
Cadastre - contributions for a low carbon economy and society
Lisbon, 26 to 27 May 2021

