

# THE SWEDISH REAL PROPERTY REGISTER, GEODATA AND ENVIRONMENTAL INFORMATION

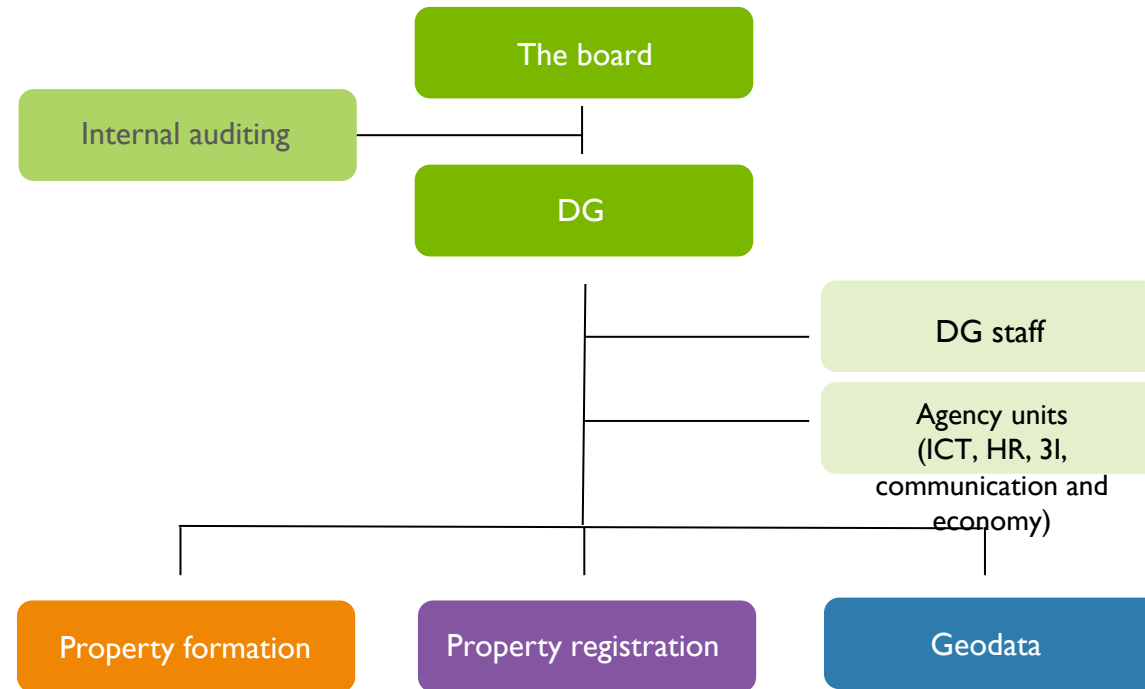
---

JOINT PCC AND EUROGEOGRAPHICS CLRKEN WEBINAR, PCC CONFERENCE  
LISBOA, 26 OF MAY 2021

GUNNAR ERSBO, MAGDALENA ANDERSSON



# LANTMÄTERIET'S ORGANIZATION



# FACTS IN BRIEF

We have about 2,000 employees in 50 locations.

Our head office is in Gävle.

We work under the Ministry of Finance



# REAL PROPERTY REGISTER

Sweden has a long tradition of work with real property information.

- ▶ 1227 – Oldest known document about land transfer
- ▶ 1628 – Systematic survey of Sweden started

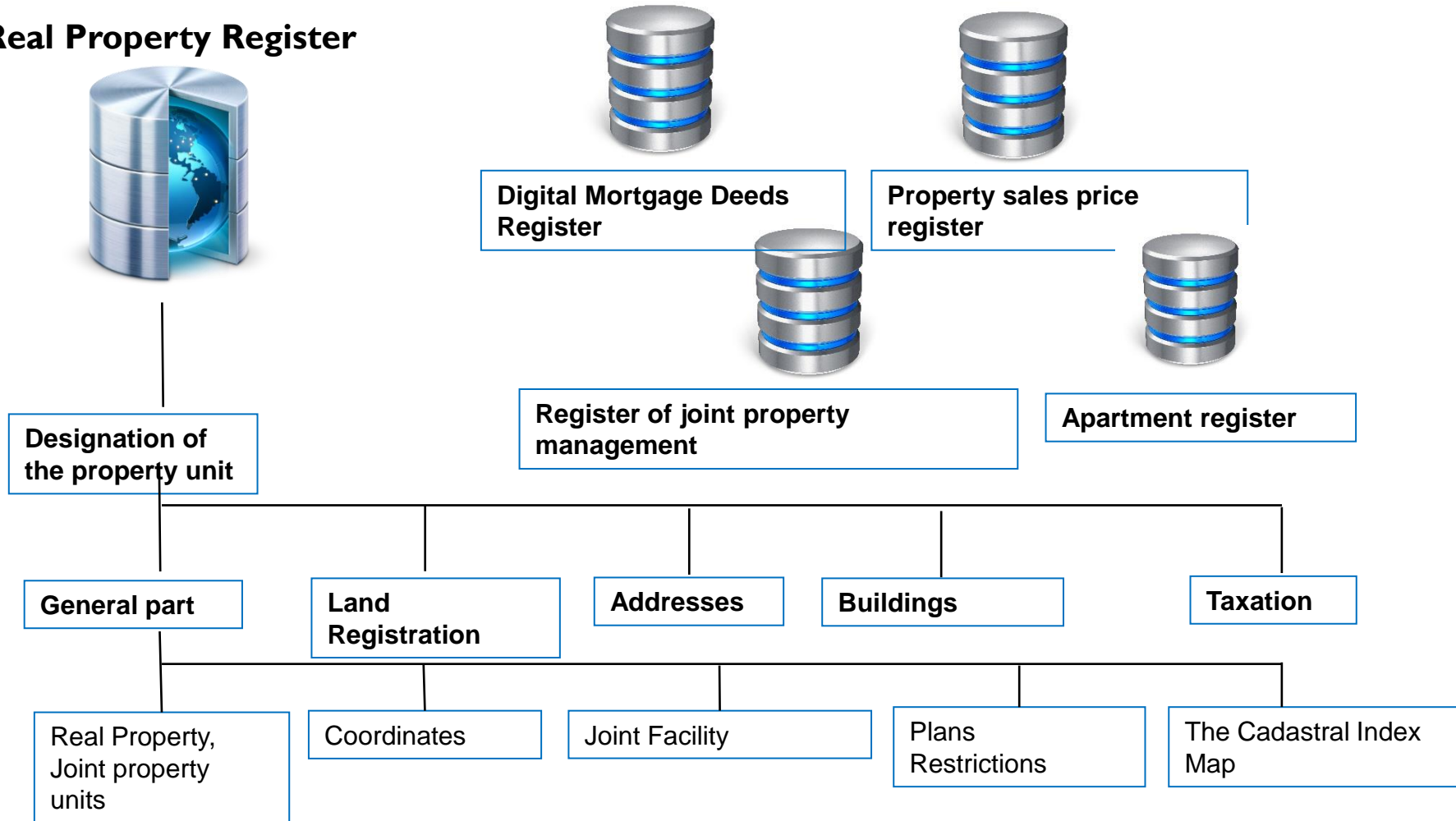


- ▶ 1995 – Property data reform was finished, **test started in 1969 and production from 1976.**
- ▶ 2021 Platform – provision of data (step 1, detailed plans and buildings)
- ▶ 2025 Smart built environment – building, planning and cadastral activities in one process



# REAL PROPERTY INFORMATION

## Real Property Register



# GEOGRAPHIC INFORMATION

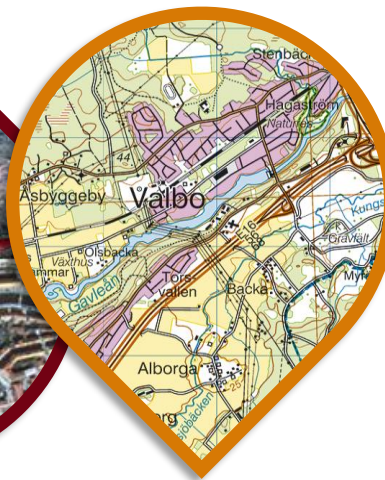
Digital e-services:

[Min Karta \(lantmateriet.se\)](http://lantmateriet.se)

<https://kartutskrift.lantmateriet.se>

Aerial photo interpretation

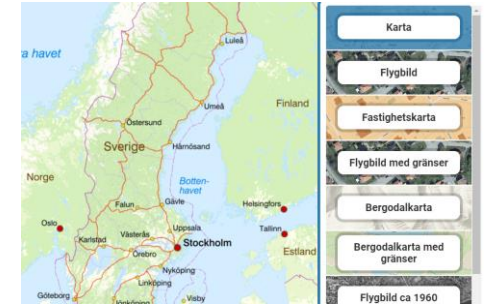
Cooperation with other parties



Aerial image and elevation data

Co-operation with municipalities

Cartography



Kartan är anpassad för utskrift i olika pappersformat och i skala 1:10 000 kan fastighetsindelning och/eller gatunamn läggas till. Färgen och rastretningen kan visas olika bra i olika pdf-läsare.



# PARTICIPATING AUTHORITIES AND ORGANIZATIONS IN THE GEODATA COUNCIL

The national board of housing, building and planning,  
The county administrative board of Värmland,  
The Swedish civil contingencies agency,  
The Swedish environmental protection agency,  
The Swedish maritime administration,  
Statistics Sweden,  
Swedish association of local authorities and regions  
Swedish university for agricultural sciences  
Swedish meteorological and hydrological institute  
The Swedish forest agency,  
The Swedish transport administration  
Swedish agency for Marine and water management  
The City of Malmö





# Lantmäteriet and environmental information

Provide up-to date and reliable geodata - a basis for the society and its development. E.g. rights and restrictions affecting a property, an area. The information is fundamental for e.g. planning, management of resources, environmental analysis work .

Well-developed co-operation in areas of up-dating data, provision and combination of geodata, development activities.

Some examples:

- Building information and their attributes
- Infrastructure development: roads, railroads, broadband, charging posts for cars etc.
- Hydrography in network
- Questions on a Marine Cadastre (water and land management)

A smarter planning and building process and a national platform for provision of geodata.

Activity plan as to the geodata strategy for 2021 – 2025

